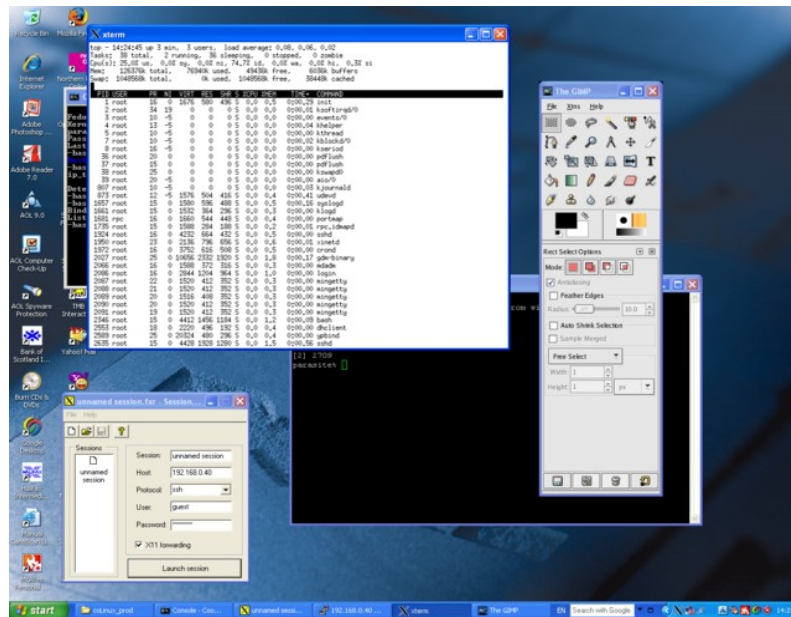




## Quick Installation Instructions for Fedora-coLinux free edition

M.A. O'Neill



Fedora coLinux parasite communicating with host XP desktop via [FreeXer X](#) server.

### Introduction

Installation of **Fedora coLinux** requires at at least 5Gb of disk space on a machine running **Windows-XP**, **Windows-2000** or **Windows-NT**. This version of coLinux \*may\* work on **Windows-Vista** as well, but as we don't have access to a Vista machine, we haven't been able to test this.

You must install this package on an **NTFS** file systems. You can have **FAT32** file systems on **Windows-NT** based systems but **Fedora coLinux** will not work with those.

### Detailed installation instructions.

1. Download the distribution **FC6Small-1.0.x.rar** onto a local disk with at least 5-8Gb of free disk space.

2. Obtain a copy of the [winrar](#) shareware package and install it. Although this is shareware you are allowed to use it for several weeks before making payment and should therefore have ample time to extract archive in the evaluation period.

\*3. Decompress the the distribution by clicking on the **FC6Small-1.0.x.rar** icon and then selecting **extract here** from the pop up menu which appears.

\*4. Click into the **coLinux\_small\_SF** directory. Extract the root file system



(**FC6\_root\_fs\_small.rar**) and the swap file system (**swap\_1024Mb.rar**) as instruction 3 above<sup>1</sup>.

5. Click on **boot\_colinux\_parasite\_small**. This will install **coLinux** and the various file systems and network devices required to make it work. Remember to install into **<drive letter>:colinux\_small\_SF\coLinux**. follow the installer instruction remembering to create the **coLinux tap device**. when the installer finishes you will need to create:

- **Microsoft loopback device** (rename it **loopback**)
- **coLinux tap device** (rename it **tap2**). This can be done via the **XP hardware wizard**.
- rename the tap which was created by the **coLinux installer** as **tap**
- if the **LAN** interface isn't called **Local Area Connection** you need to rename it.
- bridge **Local Area Connection** and **tap2** using a **network bridge**.

6. Press **return** in response to "**continue>**" when network components are set up.

7. Press **return** again in response to **default parasite load** (this will default the maximum number of **coLinux parasites** supported by the host **XP** OS to 1). Note that you will need to create new uniquely name taps for each new parasite (e.g. **tap2**, **tap3** say for second parasite etc). On a normal desktop machine it only really makes sense to run one instance of **coLinux**.

8. Set coLinux memory size to half the available memory in the target hardware (you can find how much memory is in the machine by selecting **control panel** and then **system** from the **start** menu).

9. The **coLinux** virtual machine will now boot. You can now:

- Install **ssh** (click on **ssh.exe** in install directory to install this ) and connect to the parasite via 192.168.0.40 from the XP host OS.
- Install **VNC** (click on **VNC.exe** in install directory to install this) and make a **X-terminal (gdm)** connection to parasite on **192.168.0.40** from the **XP** host OS.

10. To login root password is **78ui89io**. To activate the external ethernet connection simply type **ifup eth1** in **cs**h or **bash** shell (this assumes you have a **DHCP** server which is serving out I.P. addresses on your local network). There is also a guest account (userid **guest**, password **12qw34er**)

11. To remove the distribution click on the **remove\_colinux\_parasite** icon or **remove\_colinux\_parasite\_service** icon.

12. You can create links to the **boot\_colinux\_parasite\_small** and **remove\_colinux\_parasite** icons and move them onto the desktop. You can then bring the machine up by clicking on the **boot\_colinux\_parasite\_small icon**.

---

<sup>1</sup>Actually the install script now takes care of these steps automatically.



13. You can also install **coLinux** as an **XP** service by clicking on **boot\_colinux\_parasite\_service**. If you do this note that you also need to **start/stop** the **coLinux** service (via the **services panel** which can be reached via the **XP control panel**).

14. You can mount additional virtual **coLinux** file systems on **/dev/cobd1** (by editing the initialisation file **FC6\_coLinux\_small.txt**). Preformatted and blank file systems are available from the [coLinux](#) website.

A full installation manual is available should you have problems (at cost). Contact [colinux@tumblingdice.co.uk](mailto:colinux@tumblingdice.co.uk) for further details or go to the [Tumbling Dice](#) website.

This distribution is limited to ~1Gb compressed in order to enable us to distribute it via SourceForge. If you require a full Fedora Core distribution this can be supplied at cost on a DVD. Contact [colinux@tumblingdice.co.uk](mailto:colinux@tumblingdice.co.uk) for further details or go to the [Tumbling Dice](#) website.